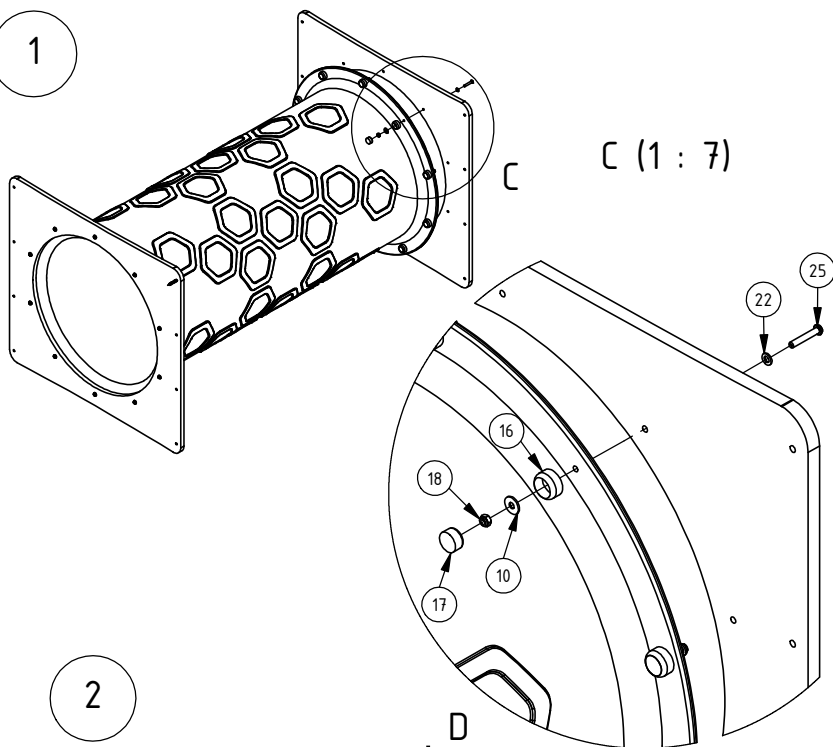
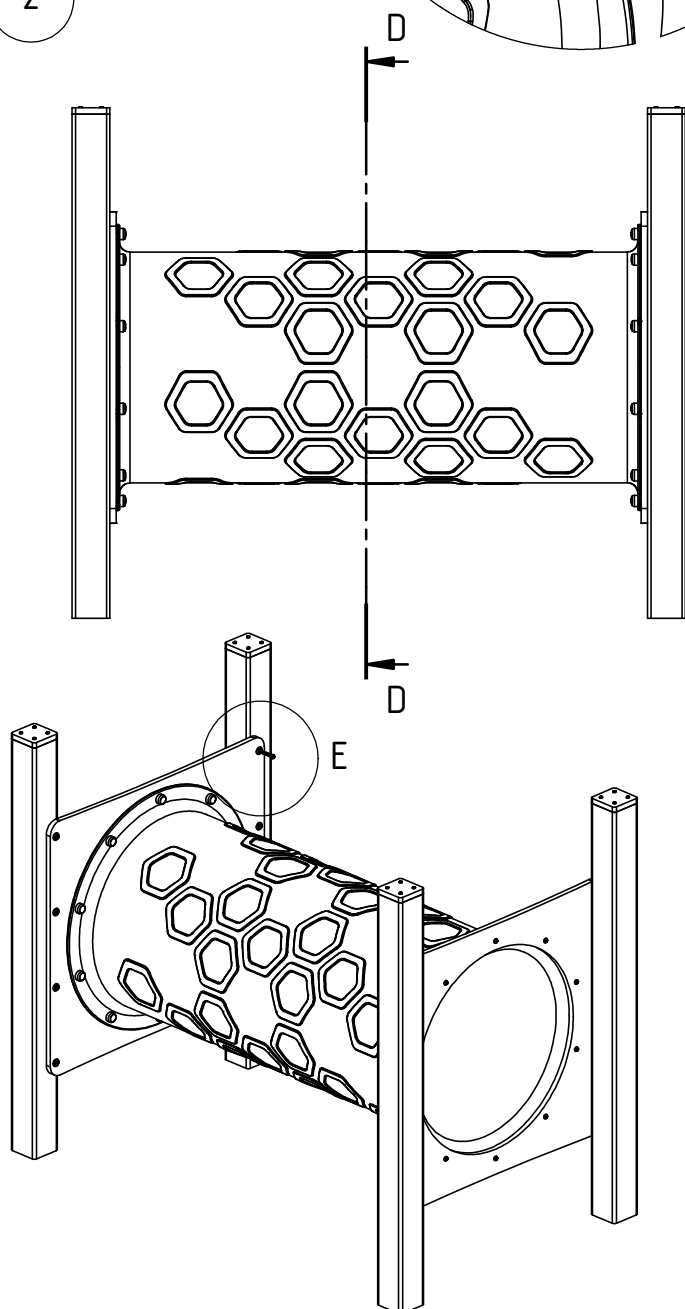


# INST\_80\_48

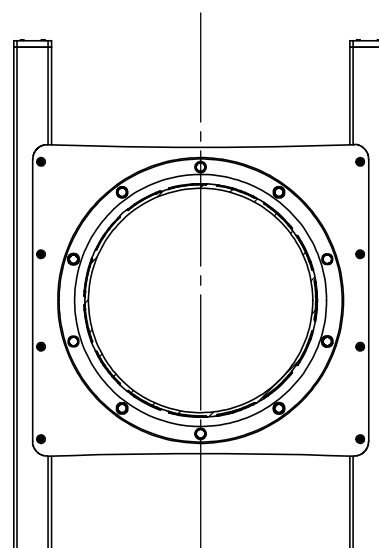
1



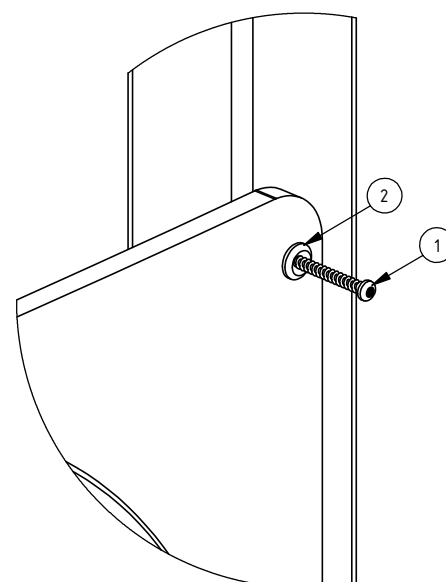
2



D-D (1 : 18)



E (1 : 4)



Nr:

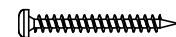
$\Sigma$

Element:

1

16x

S6x60



2

16x

W6x60



10

20x

DIN 9021 - 6x18



16

20x

K1\_d21\_B



17

20x

Z1\_d21\_B



18

20x

DIN 985 - M6



22

20x

DIN 125 - 6x12



25

20x

ISO 7380 - M6x35

